



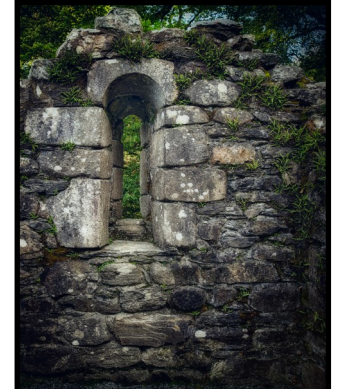
Since 1891

# Fresno Camera Club



Volume 66 Issue 1

January 2023



## Congratulations!

### Inside This Edition



Calendar of Events.....	2	YE Architecture Winners .....	10
Meeting Info .....	3	YE Portrait Winners .....	11
Membership Form.....	3	YE Wildlife Winners .....	12
YE Winners .....	4-5	YE Scenic Winners .....	13
YE Color Print Winners .....	6	YE Pet Winners .....	14
YE MC Print Winners .....	7	Luncheon Photos.....	15-16
YE Digital Winners .....	8	PSA Info .....	17
YE Floral Winners.....	9	2023 Officers .....	19

# Fresno Camera Club—January Highlights

---

## Meetings for January

Monthly Meeting –January 17th at 7 pm

## Print Competition


FCC—Fresno Camera Club

SJVCCC– San Joaquin Valley Camera Club Council

## Upcoming Dates:

January 10	FCC Board Meeting
January 8	SJVCCC Board Meeting
January 17	FCC Meeting
February 8	SJVCCC Digitals Due
February 12	SJVCCC Meeting
February 14	FCC Digitals Due
February 21	FCC Meeting

# January 2023

Sun	Mon	Tue	Wed	Thu	Fri	Sat
	2	3	4	5	6	7
8 SJVCCC Board Meeting	9	10 FCC Board Meeting	11	12	13	14
15	16	17 Monthly Meeting 7 p.m.	18	19	20	21
22	23	24	25	26	27	28
29	30	31				

# Fresno Camera Club—January Highlights

---

## January Meetings

January 8th—Board Meeting at 7 pm

January 17th the Monthly meeting

Don't forget, you need to be a member to compete!

### Fresno Camera Club Membership for January 1 - December 31, 2023

The completed form below, together with your check/cash will pay your dues for the year 2023

*Dues are paid by Calendar Year*

Name: _____ PSA Member Yes [] No []	<table border="1"><thead><tr><th>Select Membership Type</th></tr></thead><tbody><tr><td><input type="checkbox"/> Single \$30</td></tr><tr><td><input type="checkbox"/> Family \$45</td></tr><tr><td><input type="checkbox"/> Student \$15</td></tr></tbody></table>	Select Membership Type	<input type="checkbox"/> Single \$30	<input type="checkbox"/> Family \$45	<input type="checkbox"/> Student \$15
Select Membership Type					
<input type="checkbox"/> Single \$30					
<input type="checkbox"/> Family \$45					
<input type="checkbox"/> Student \$15					
Address _____ Street Address / Apartment #					
City _____ State _____ Zip _____					
Home Phone: _____	<table border="1"><thead><tr><th>Directory</th></tr></thead><tbody><tr><td><input type="checkbox"/> Printed \$5</td></tr><tr><td><input type="checkbox"/> Digital Directory-Free</td></tr></tbody></table>	Directory	<input type="checkbox"/> Printed \$5	<input type="checkbox"/> Digital Directory-Free	
Directory					
<input type="checkbox"/> Printed \$5					
<input type="checkbox"/> Digital Directory-Free					
Cell Phone: _____					
Email: _____					
<b>Make Checks Payable to Fresno Camera Club</b>					

Send to: Rosemary Aguinaldo, 2229 N Arthur Avenue, Fresno, CA 93705

New Membership  Renewal Amount Paid \$ \_\_\_\_\_  Cash  Check # \_\_\_\_\_



## Fresno Camera Club—January Highlights

---



2022 Total  
High Points

Loye, Dee, Jonathan, Pat

2022 High Points  
Monochrome Prints



Loye, Dee, Pat

---

# Fresno Camera Club—January Highlights

---



2022 High Points  
Color Prints

Jim, Jonathan, Loye



2022 High Points  
Digital



Loye, Dee, Ning

# Fresno Camera Club—January Highlights



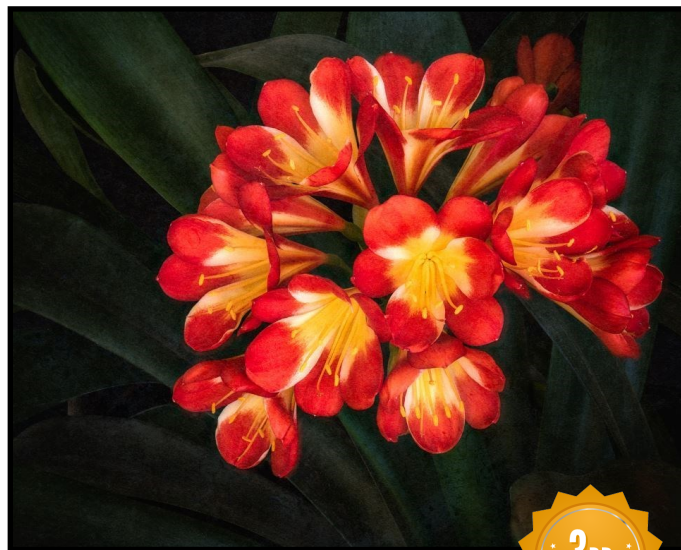
## Color Prints



Rainy Day in Venice by Jim Sanderson



Creek Fire Autumn by Patrick Rhames



Xeryus Clivia by Patrick Rhames



# Monochrome Prints



Patterns in Nature  
By Elizabeth Bedard



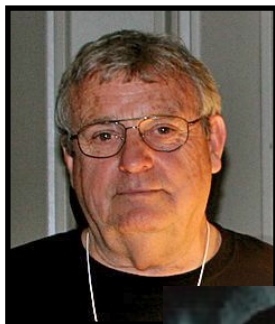
Retired Virginia Milkbarn Under Roiling Skies  
By Patrick RHames



Dunes in Death Valley 4  
by Loye Stone



# Best Digital Images of the Year



Clearing Storm over Bristlecones  
By Patrick Rhames



Death Valley Ripples in Dues  
By Loye Stone



Brown Bear Catching Salmon  
By Ning Lin



# S. Louise Stull Memorial Award for Best Flora



Blending Mode Dogwood  
By Patrick Rhames



Bristlecone Pine by Jonathan Rollins



My Japanese Maple by Jim Sanderson

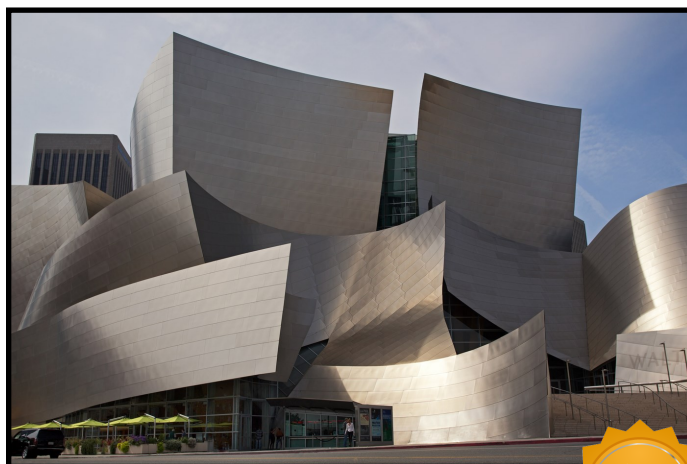
# Hanna S. Barsam Memorial Award for Best Architecture



Medieval Window Architecture  
By Patrick Rhames



Budapest Parliament Building  
By Jim Sanderson



Walt Disney Concert Hall  
By Dee Humphrey

# Elmer Lew Memorial Award for Best Portrait



Pamela by Patrick Rhames



Wild Child by Jason Meede



Janelle by Jonathan Rollins

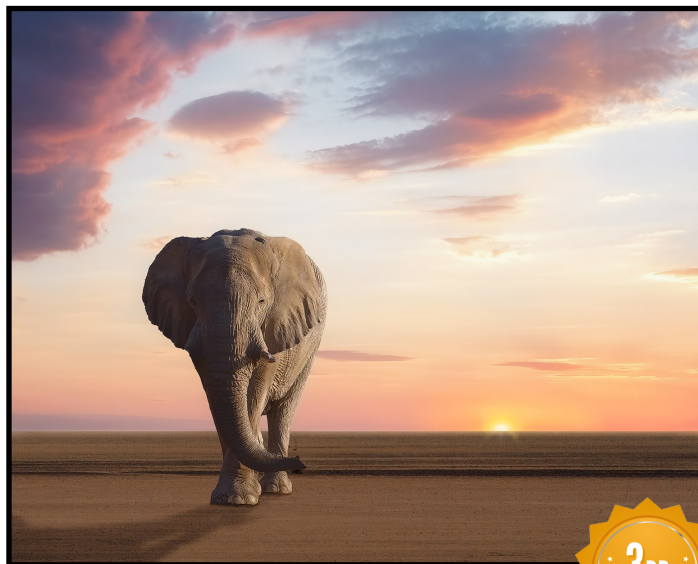
# Best Wildlife



Mountain Goat #1 by Jonathan Rollins



Migrating Monarchs  
By Patrick Rhames



Out of Africa by Jim Sanderson

## Best Scenic



Shooting the Dunes with Pat  
By Jim Sanderson

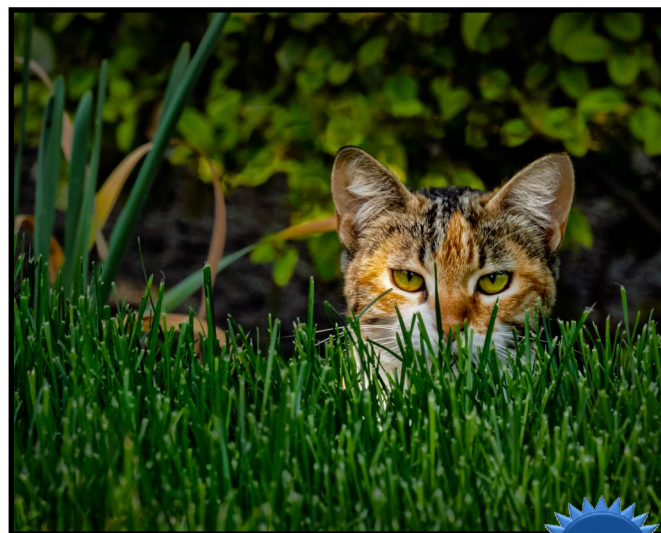


Yosemite at 22 degrees by Dee Humphrey



Mono Lake by Jonathan Rollins

# Fresno Camera Club Best Pet



Hunter by Jonathan Rollins



He IS my Pet by Patrick Rhames



Unamused Oliver  
by Elizabeth Bedard



# Pictures from the End of Year Competition



# Fresno Camera Club—January Highlights

A Big Thank you to  
Dean Taylor for being  
our judge





# Fresno Camera Club—January Highlights

---

## PSA Information

Are You a Member of the Photographic Society of America (PSA)?

### "ADVANTAGES OF HAVING PSA MEMBERSHIP

PSA has a **Personalized Image Evaluation Service**. This service is especially helpful if the maker wants to have his/her skills evaluated, if the maker would like to know what constitutes an acceptable image in one of the PSA Divisions, or for pre-viewing Images before entering them in club competition or a PSA recognized Exhibition.

PSA also has an **Image Analysis Course**, which is helpful in judging ones own photos or becoming a certified judge.

These are free services offered by PSA to members. Need a Mentor? Go to <http://psa-photo/org.php?member-education-mentor-service>

### PSA Galleries

*PSA has several galleries on this website where members can share their photography with others.*

PSA Member Galleries - For All PSA Members  
Each State, Province, or Country may contain individual member galleries that showcase members' work. Individual images and bios in galleries may be updated by members as often as they would like. A list of available galleries is accessed from the left pane of this webpage, grouped according to PSA Member Area. They can also be accessed from a state/province/country and some chapter pages on the site.

Each PSA member can create a gallery of up to 6 images and a biography with a link to a personal web gallery. **Member galleries stay on the PSA site for as long as a member remains a PSA member in good standing.**



---

## San Joaquin Valley Camera Club Council



Next meeting: Sunday, February 12th at 10 am

Digital Images due February 8th by 5 pm.

All Fresno Camera Club Members are able to participate in Competitions. If you don't want to participate in competitions yet, you can come and watch the judging.

Lunch is now \$25 per person.

Location: Wyndham Garden Fresno Airport, 5090 E Clinton Way, Fresno, CA 93727

# Fresno Camera Club—January Highlights

---

## Fresno Camera Club 2023 Officers and Board

President	Jim Sanderson epeorusjim@aol.com
Vice President	Jonathan Rollins orchidwow@gmail.com
Secretary	Elizabeth Bedard eabedard@gmail.com
Treasurer	Rosemary Aguinaldo nrustygirl4@aol.com

### Directors

Harris Hays, Shelley Stone, John Crawford  
Dee Humphrey, Jonathan Rollins, Art Serabian

### Chairs

Digital Chairman	Pat Rhames Pat.Rhames@gmail.com
Print Chairman	Lori Azevedo Lori@loriazevedo.com
Hospitality	Shelley Stone Shelleymaxine@yahoo.com
Sound Equipment	Michael Smith myleicas@earthlink.net
Membership Chair	Beth Smiley bethsmiley2002@gmail.com
Council Rep	Loye Stone chililoy@yahoo.com
Highlights Editor Webmaster	Elizabeth Bedard eabedard@gmail.com
Club Photographer	John Crawford crawford6129@gmail.com

## Contribute to our Website!

Check out [www.fresnocameraclub.org](http://www.fresnocameraclub.org) Email **Elizabeth** if you have any articles for the Fresno Camera Club website.

## “Highlights” Submission

Do you have an article you would like published in an issue of “Highlights”? Do you have a suggestion for something you would like to see in “Highlights”? If you do, feel free to contact **Elizabeth Bedard** at [eabedard@gmail.com](mailto:eabedard@gmail.com)

Submissions for inclusion in the next month’s “Highlights” should be received by the 15<sup>th</sup> of the previous month to insure inclusion in the next issue. This includes change of address, etc. All constructive criticism and corrections are welcome

“Highlights” is the monthly newsletter of the Fresno Camera Club. It is published for members of the club and anyone interested in photography.

It is distributed to members by email in a PDF format. Printed copies are mailed to those who do not have email or who request it. A number of printed black and white copies are available at club meetings.

Back issues of “Highlights” may be found on the Fresno Camera Club website at [www.fresnocameraclub.org](http://www.fresnocameraclub.org).

All contents are copyrighted unless otherwise indicated. Please contact the editor for permission to reproduce any articles within this publication.